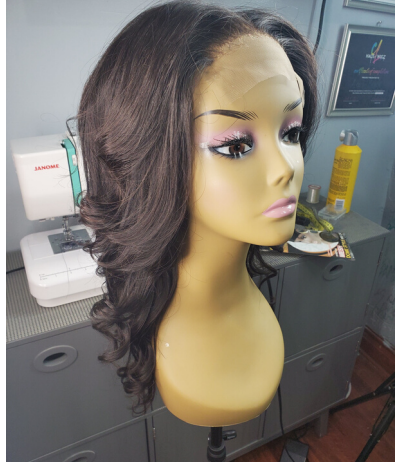


ALEXIS BAXTER

CUSTOM WIGS

ONLINE CATALOG & LOOKBOOK



WWW.BUNDLEBOOSTERS.COM



ALEXIS BAXTER

ABOUT ME

**CERTIFIED WIG MAKER &
LICENSED COSMETOLOGIST**

Welcome to my custom wig catalog. I have been a licensed cosmetologist for over 20 years. I've been running my own beauty salon, Cosset Beauty Lounge for over 13 years, with hair extensions as my specialty. I have been making wigs for 3 years now. I'm so happy to showcase my collection of wigs to make ordering an easier process for you. Thank you so much for supporting me and I can't wait to make you a wig.

ABOUT THE WIGS

These Wigs are custom made just for you! That means it fits your head perfectly and styled exactly how you want it. A custom wig consists of bundles of hair along with a closure or frontal sewn to a cap. All the wigs are made from Bundle Boosters Brazilian hair and hand customized with bleached knots and hairline plucking to create a natural effect. All wigs are constructed on a sewing machine for ultimate durability. A light stretch mesh cap is used for ventilation of the scalp. These wigs can be maintained (Shampooed & Blowdryed) just like one's natural hair. They are well worth the money and look very natural. You will always be salon ready!!!





HAIR QUALITY

Bundle Boosters is dedicated to achieving full, luxurious and beautiful hair to gain a long-lasting beauty.

100% real virgin human hair

1 year + life span under good care, durable and reusable.

Machine sewn weft tightly to prevent shedding.

All hair cuticles are in a same direction to prevent tangling.

LET'S GET STARTED!

CHOOSE YOUR TEXTURE

Texture is the Curl Pattern. We have (5). Straight, Loosewave, Bodywave, Deepwave & Kinky Curly

CHOOSE YOUR LENGTH

How long do you want your hair. Most of our lengths go from 12:"28" long. You may choose Neck, Shoulders, Mid-back or Waist length

CHOOSE YOUR COLOR

Basic color is Natural Black. You have an option of upgrading to adding color.

CLOSURE OR FRONTAL

If u dont want something low maintenance that you can take on and off- Get a closure!

If u want to be able to pull it back and show a full hairline get a frontal!

CHOOSE YOUR STYLE

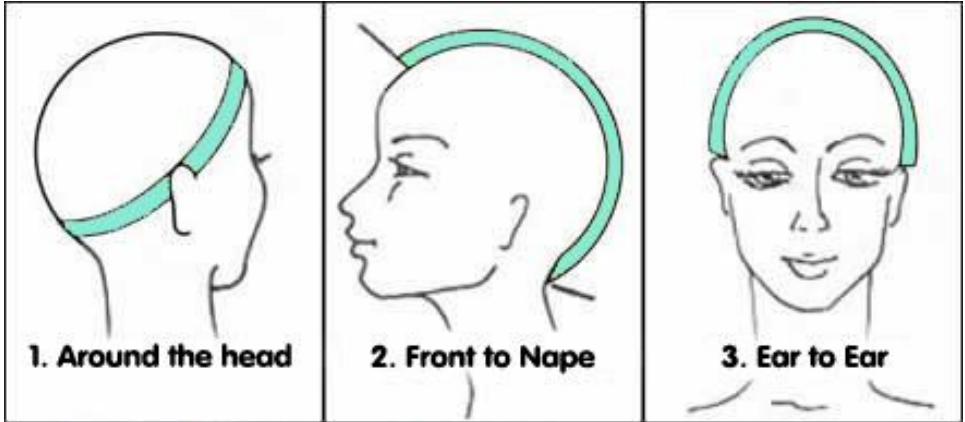
Utilize the wig gallery for ideas. All wigs can be customized to your preference

HEAD MEASUREMENTS

Must know head circumference and if hair is thick, reg or thin



HOW TO MEASURE



HEAD MEASUREMENTS

Most important is head circumference size

NATURAL HAIR LENGTH

Is your hair long, medium medium-short or short

NATURAL HAIR DENSITY

Is your hair Thick, Average, or thin

HAIR TEXTURES

Texture is your hair curl pattern. We carry options of no curl all the way to a very tight curl. Most of these textures may be worn with it's natural curl or straightened out if desired. There are (5) texture options: Straight, Bodywave, Loosewave, Deepwave, Kinky Curly.



Body wave



Straight



Deep Wave



Curly Hair



Loose Wave



CLOSURE OR FRONTAL?

Closures are size 4"x4". They are low maintenance and require no adhesives. However they are limited to pulling back to show full hairline
Frontals are 13" x 5".

They require more maintenance and either wig tape, lace hold spray or glue to adhere to skin.
Shows entire hairline as if yours



LENGTH OF HAIR

Where you want your hair to fall is vital for the look and affects the price. Most of our wigs range from 10"-28" long.

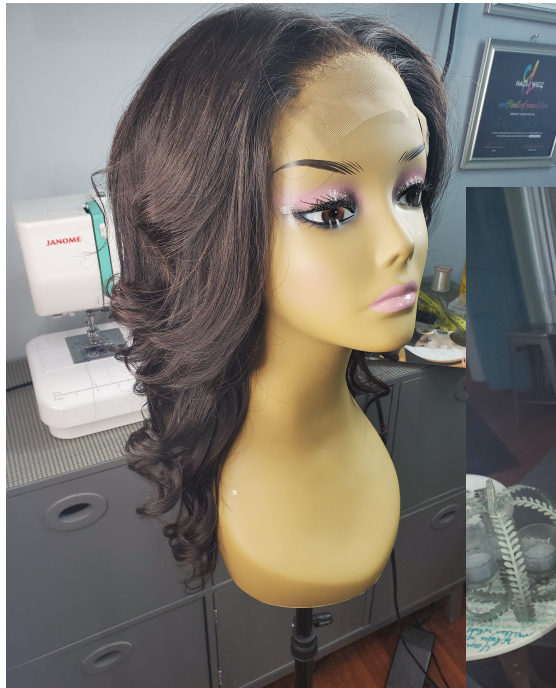




CUSTOM COLOR

All Wigs come in a Natural black color.
Custom color is available upon request
for an additional charges

* Consultation will discuss achievable
colors



ORDER NOW

"TIFFANY"

16",16",14" & 12" CLOSURE

Texture: Straight

Color: Natural Black

Part in the middle, layered & curled



ORDER NOW

"MARIA"

14", 14", 12" & 12" CLOSURE

28", 28", 26" & 18" CLOSURE

Texture: Deepwave

Color: Natural Black/ Blonde

Beautiful wave pattern, can be worn wet look or air dried. Great look for the beach.



ORDER NOW

"KAMARIA"

24", 22", 20" & 18" CLOSURE

24", 22", 20" & 14" FRONTAL

Texture: Loosewave

Color: Two tone w/ Chunky strip

Beautiful Chocolate Brown Color with a
Honey Strip around the front hairline.



ORDER NOW

"MIA"

16", 16", 14" & 12" CLOSURE

Texture: Loosewave

Color: Natural Black

Super layered and framed faced cut
curled to perfection.



ORDER NOW

"JESSICA"

24", 22", 20" & 16" CLOSURE

18", 16", 14" & 14" CLOSURE

Texture: Loosewave

Color: Red/ Blonde

Sultry look with natural eye swoop



ORDER NOW

"ALEXIS"

28", 28", 26" & 18" CLOSURE

Texture: Straight

Color: Natural Black

Classic part in the middle, straight & long



ORDER NOW

"CHRISTINA"

12",12" & 12" CLOSURE

Texture: Straight

Color: Auburn orange

Neck length Bob w/ offset part and off the face push back. Easy breezy look.



ORDER NOW

"NICOLE"

16",16" & 14" FRONTAL

Texture: loosewave

Color: Natural Black

Simple everyday look. Can be worn curled or straight.



ORDER NOW

"RACQUEL"

10", 10", 10" & 12" CLOSURE

Texture: Straight

Color: Natural Black

Sleek bob w/ exaggerated eye bang
that's layered to perfection



ORDER NOW

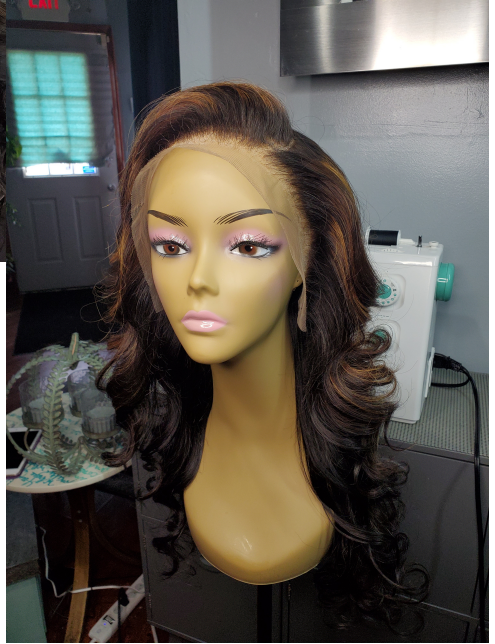
"BELL"

10",10",10" & 12" CLOSURE

Texture: Deepwave

Color: Natural Black

Off centered curly bob. Can be worn natural or wet look.



ORDER NOW

"MARCILLA"

24", 22", 20" & 14" FRONTAL

Texture: Straight

Color: Natural Black, brown, blonde,
platinum

Glamorous curls w/ side part dressed
w/ highlights and lowlights. Can be
worn curled or straight.



ORDER NOW

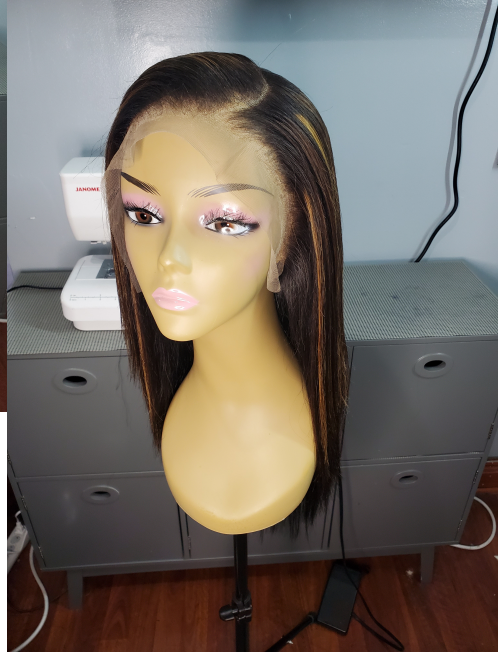
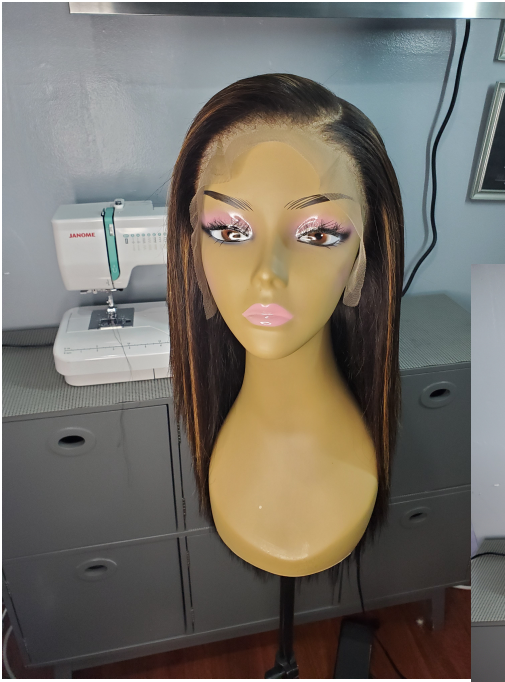
"STEPHANIE"

10", 10", 10" & 10" CLOSURE

Texture: Straight

Color: Natural Black

Sheek, heavy bang, 90 degree cut bob
feathered to perfection



ORDER NOW

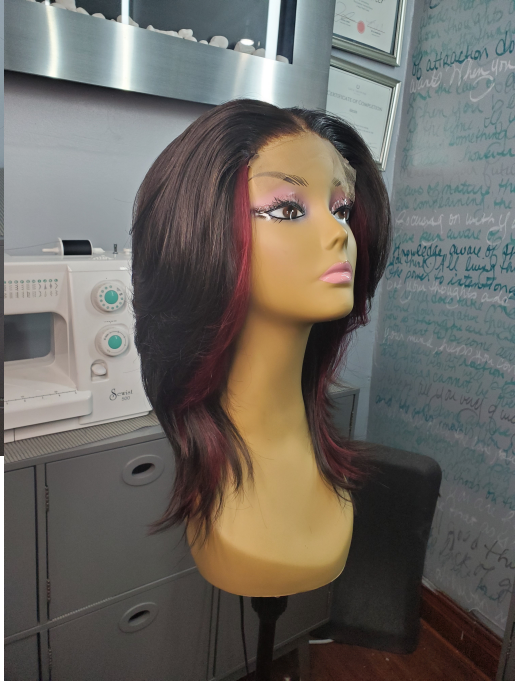
"LATRELL"

18",18",16" & 14" CLOSURE

Texture: Straight

Color: Natural Black w highlights

Classic curved side part



ORDER NOW

"CHYNA"

14",14",12" & 12" CLOSURE

Texture: Straight

Color: Natural Black with a splash of color

Middle part, heavy layering and feathered



ORDER NOW

"KRISTEN"

14", 14", 14" & 14" CLOSURE

Texture: Straight

Color: Natural Black

Side part natural wrap



ORDER NOW

"SIOBAHN"

28", 28", 26" & 18" CLOSURE

Texture: Deepwave

Color: Natural Black

Fluffy waves, very natural big hair

MAKE IT YOURS

If you see the wig you want, perfect!!!

Keep in mind all wigs in the catalog can be customized to your preferences. You may choose frontal/ closure preference, parting placement, length, texture and color options.

If you dont see a wig that you want, that's ok too. Just send us a pic with specific details and we will do our best to accommodate you.

HOW TO ORDER

STEP 1

Choose Your Style, Length, Color,
Choose Closure or Frontal Option
Take Measurements of Head
Email all info plus contact number to
bundleboosters@gmail.com

STEP 2

Allow 24 hours for a response of Price and confirmation
of Wig Request.
A invoice will be sent with all details and 50%
(non-refundable) deposit

STEP 3

Allow up to 14 days to make the wig; Up to 30 days for
custom color. Upon completion of wig, remaining balance
due. Most wigs are done early.

STEP 4

All Wigs are shipped w/ signature confirmation



ALL SALES ARE FINAL! NO REFUNDS

PRICES

ALL WIGS INCLUDE CUT & STYLE

How to get the total cost of a wig?

Total Cost of Wig= Wig construction type (closure or frontal) + Length + Color.



WIG CONSTRUCTION

Closure

PRICE

\$175.00

Frontal

\$225.00

LENGTH

10-12"

\$100.00

14"-16"

\$125.00

18"-20"

\$150.00

22"-24"

\$200.00

26"-28"

\$225.00

COLOR

Natural Black

Included

Single Process

\$90.00 & up

Double Process

\$150.00 & up

Highlights

\$90 & up

Ombre

\$75 & up

Chunky Strip

\$40&up

***Color price fluctuations is based on wig length**

Final Color price will be given upon consultation

*** Curly hair + \$20**

CONTACT US



EMAIL

bundleboosters@gmail.com

WEB

bundleboosters.com

CARE INSTRUCTIONS

Wigs should be treated like your own natural hair. They should be combed, brushed and moisturized.

Because the hair on the wig is not connected to a follicle, you want to shampoo & condition your wig with hydrating products. Let your conditioner sit for 20 mins before rinsing

For best results, spray with leave-in conditioner and let the wig air dry. Apply coconut oil before styling.

You can store your wig in a plastic zip lock bag. Be sure to flip the wig inside out before storing.

REFRESH IT. RENEW IT. REUSE IT.

WIG MAINTENANCE

ONLY \$75

REFRESH IT.

IF YOU WANT ME TO MAINTENANCE YOUR WIG, I WILL DO SO FOR A SMALL FEE. WIG MAINTENANCE

INCLUDES:

PROPER SHAMPOO & CONDITIONING

MOISTURIZER TREATMENT

MINOR STITCHING

BAND REPLACEMENT

STYLING

RENEW IT.

ADDL CHARGE IF YOU WANT IT CUT IN A DIFFERENT HAIRSTYLE

REUSE IT.

ONCE YOUR DONE WITH YOUR OLD WIG, YOU MAY BE ABLE TO USE SOME OF THE HAIR FROM THE OLD WIG TO CREATE A NEW ONE. INQUIRE WITHIN!